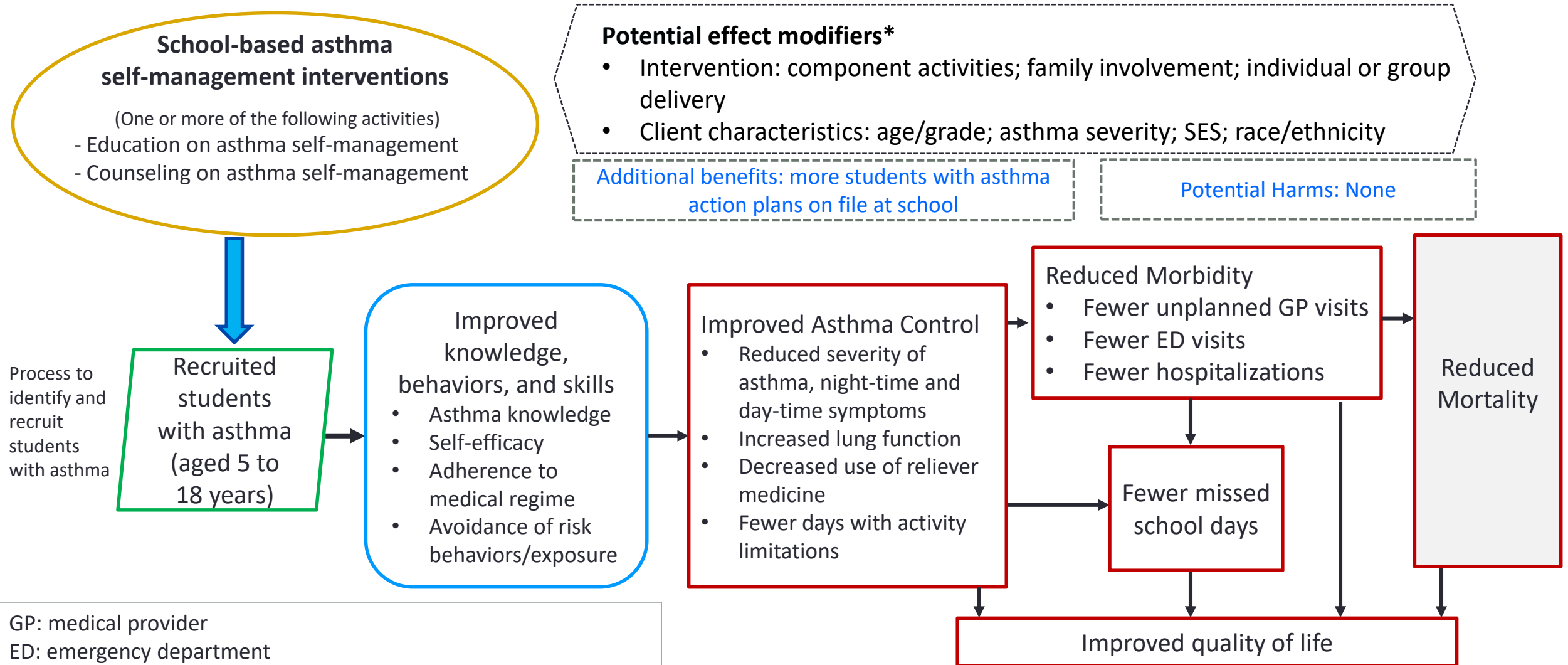


Analytic Framework: School-based Asthma Self-Management Interventions






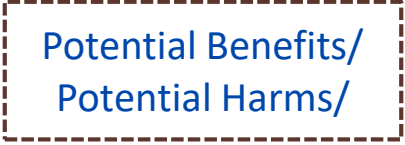



Accessible Version: <https://www.thecommunityguide.org/sites/default/files/assets/AF-asthma-school-based-self-management-508.pdf>



GP: medical provider
ED: emergency department
Health Equity: Potential to advance health equity when implemented in underserved communities
* Broader potential effect modifiers include exposure to air pollution or other asthma triggers and access to guidelines-based medical management

Source (with narrative description): Guide to Community Preventive Services. Asthma: School-Based Self-Management Interventions for Children and Adolescents with Asthma.
<https://www.thecommunityguide.org/content/tffrs-asthma-school-based-self-management-interventions-children-and-adolescents-asthma>

Legend: Icons in Community Guide Analytic Frameworks

Icon	Interpretation
	Intervention
	Recommendation outcome
	Other intermediate outcome/variable (that are not recommendation outcomes)
	Population
	Potential Effect Modifiers (affecting causal relationships)
	Potential Additional Benefits/Potential Harms
	Unidirectional block arrows are applied between intervention and population icons
	Unidirectional arrows for causal relationships
	Bidirectional arrows show feedback loops