

# Analytic Framework: Interventions to Increase Active Travel for School

## Active Travel Interventions One or more of the following activities

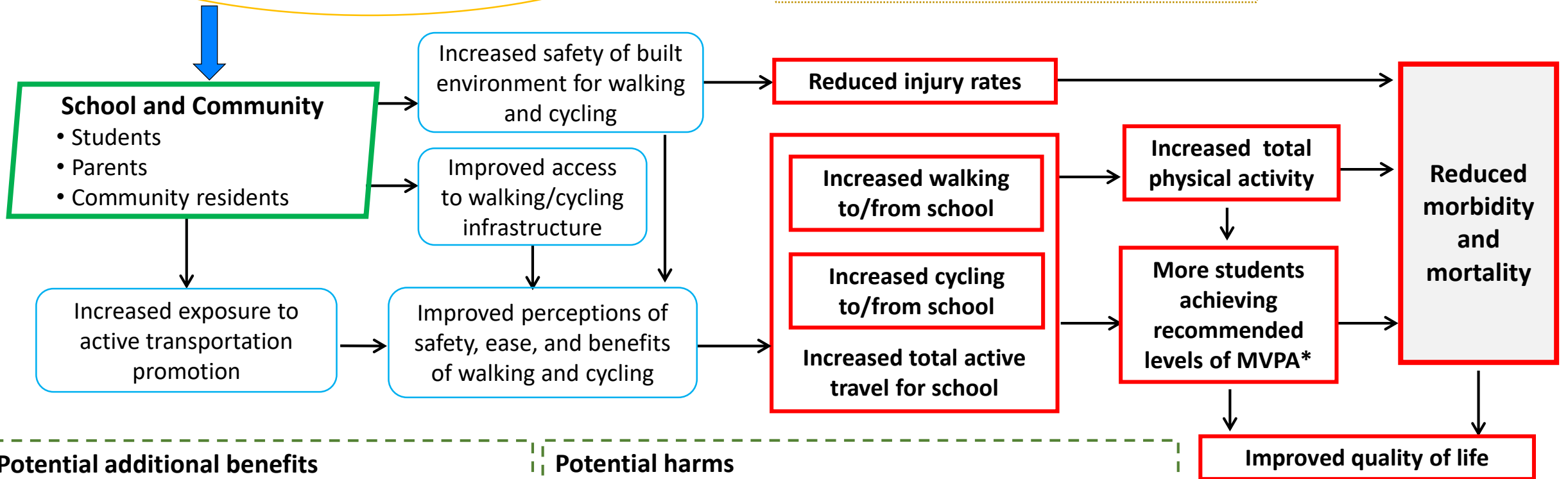
- Engineering
- Encouragement
- Education
- Enforcement

### Interventions may also include

- Evaluation
- Equity

## Potential effect modifiers

- Community and school environment
- Distances to school
- Student and family characteristics
- Intervention characteristics
- Weather and climate



## Potential additional benefits

- Increased walking and cycling among residents
- Reduce vehicle use/miles traveled
- Reduce air pollution

## Potential harms

- Increased traffic congestion in school/neighborhood
- Increase absolute number of pedestrian/cyclist injuries

\*moderate to vigorous physical activity